

Subject: Material document installation guide on SLS sPro60 HD-HS platform

Introduction:

This update installs material guides and Tips & Info CIB for **DuraForm FR1200** and **DuraForm TPU** materials. It is an update for **V5.X** Windows release for **SLS sPro60 HD-HS** platform.

This CIB list steps to follow for successful installation of the new material documents.

Installation Steps:

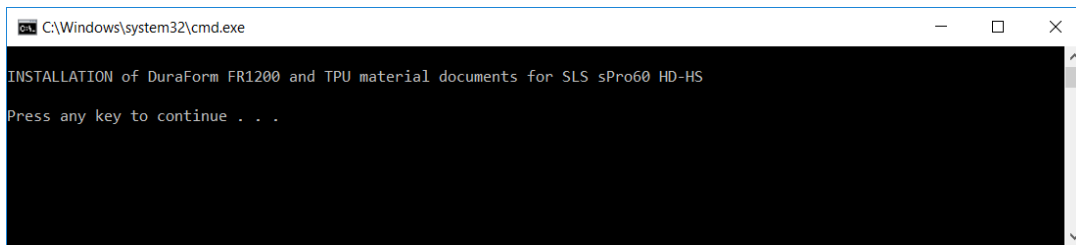
Download Steps:

- Download [sPro60 V5.X Update MaterialDocs.zip](#):
- Copy the downloaded zip file to the drive where you have Sinter software installed (**C** or **D** drive).
- Extract the zip. If you have Sinter installed in "C:\dtm" then extract to C:\ drive. Extracted path will be: "C:\sPro60_V5.X_Update_MaterialDocs"
- After extraction is complete, verify **sPro60_V5.X_Update_MaterialDocs** directory contains the following:
 - **dtm** directory
 - **InstallNewMaterialsDocsPro60.bat**

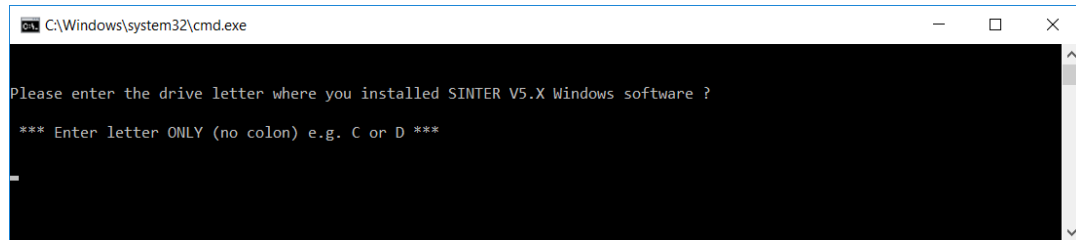
Subject: Material document installation guide on SLS sPro60 HD-HS platform

Steps to install the update:

- If BuildSetup is running, save current build packet (if needed) and close **BuildSetup**.
- In case you are on the printer PC and build is not in-progress, then run **KillSinter.exe** to close Sinter and related applications.
- Run **InstallNewMaterialsDocsPro60.bat**. You may see a security warning, please continue to run the batch file. On successful launch, you will see below screens:

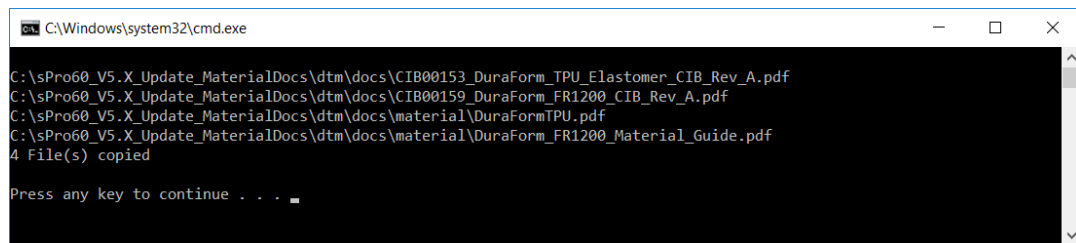


```
C:\Windows\system32\cmd.exe
INSTALLATION of DuraForm FR1200 and TPU material documents for SLS sPro60 HD-HS
Press any key to continue . . .
```



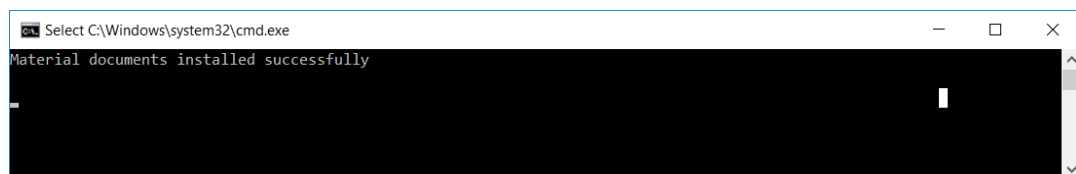
```
C:\Windows\system32\cmd.exe
Please enter the drive letter where you installed SINTER V5.X Windows software ?
*** Enter letter ONLY (no colon) e.g. C or D ***
```

- Follow the steps listed in displayed screens (Command Prompt).
- On successful installation, total **4 files** will be deployed :
 - 2 new material guides.
 - 2 “Tips and Info” CIBs.



```
C:\Windows\system32\cmd.exe
C:\sPro60_V5.X_Update_MaterialDocs\dtm\docs\CIB00153_DuraForm_TPU_Elastomer_CIB_Rev_A.pdf
C:\sPro60_V5.X_Update_MaterialDocs\dtm\docs\CIB00159_DuraForm_FR1200_CIB_Rev_A.pdf
C:\sPro60_V5.X_Update_MaterialDocs\dtm\docs\material\DuraFormTPU.pdf
C:\sPro60_V5.X_Update_MaterialDocs\dtm\docs\material\DuraForm_FR1200_Material_Guide.pdf
4 File(s) copied
Press any key to continue . . .
```

- In the end, you should see below screen on successful installation.



```
Select C:\Windows\system32\cmd.exe
Material documents installed successfully
```

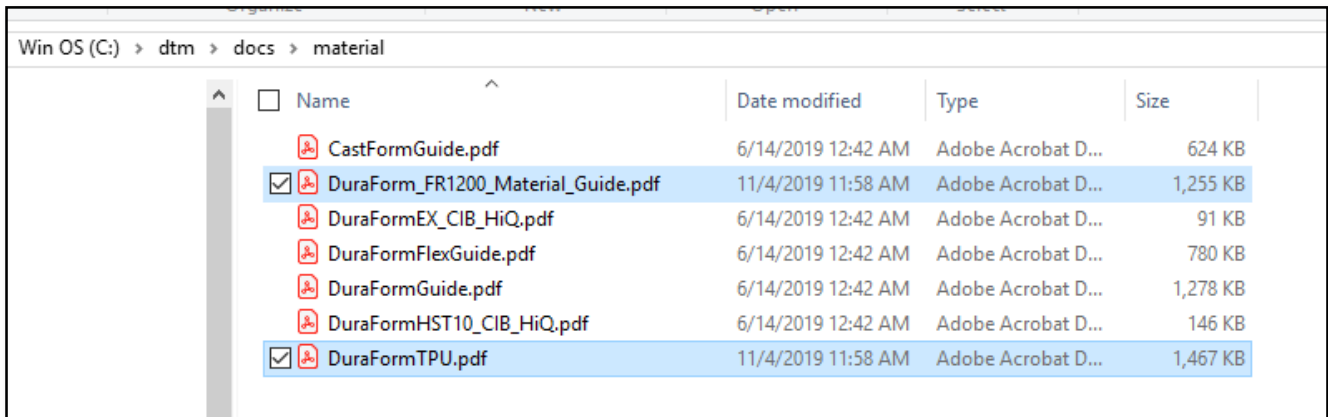
Customer Information Bulletin

Subject: Material document installation guide on SLS sPro60 HD-HS platform

Verify if the update installed successfully:

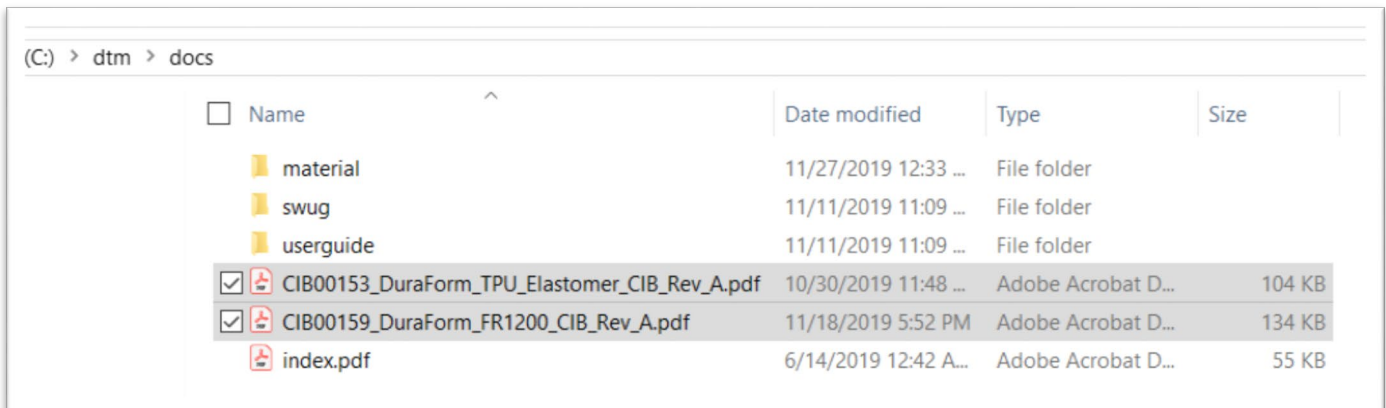
- Verify if the files are copied in the right locations as shown in below screenshots.

1. Material guides under dtm\docs\material:



Name	Date modified	Type	Size
CastFormGuide.pdf	6/14/2019 12:42 AM	Adobe Acrobat D...	624 KB
<input checked="" type="checkbox"/> DuraForm_FR1200_Material_Guide.pdf	11/4/2019 11:58 AM	Adobe Acrobat D...	1,255 KB
DuraFormEX_CIB_HiQ.pdf	6/14/2019 12:42 AM	Adobe Acrobat D...	91 KB
DuraFormFlexGuide.pdf	6/14/2019 12:42 AM	Adobe Acrobat D...	780 KB
DuraFormGuide.pdf	6/14/2019 12:42 AM	Adobe Acrobat D...	1,278 KB
DuraFormHST10_CIB_HiQ.pdf	6/14/2019 12:42 AM	Adobe Acrobat D...	146 KB
<input checked="" type="checkbox"/> DuraFormTPU.pdf	11/4/2019 11:58 AM	Adobe Acrobat D...	1,467 KB

2. "Tips and Info" CIB under dtm/docs:

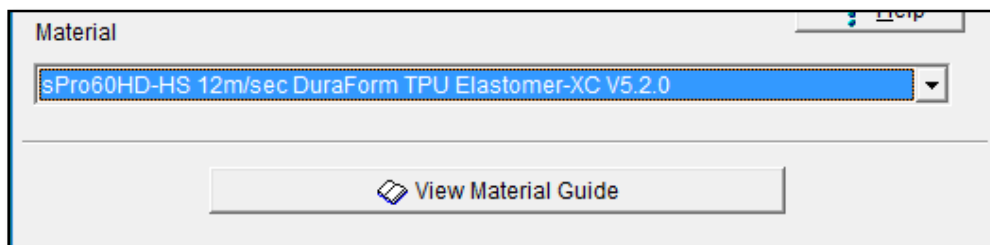
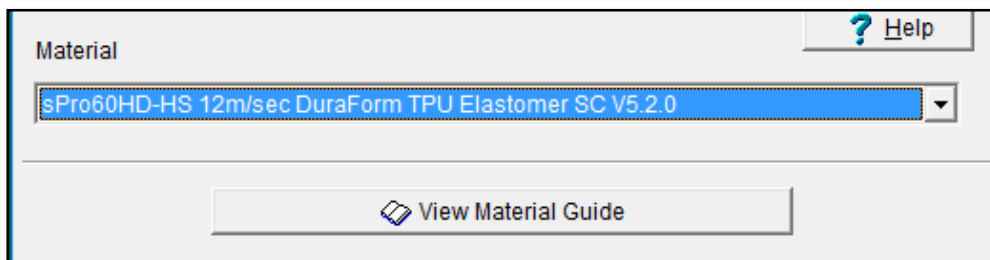
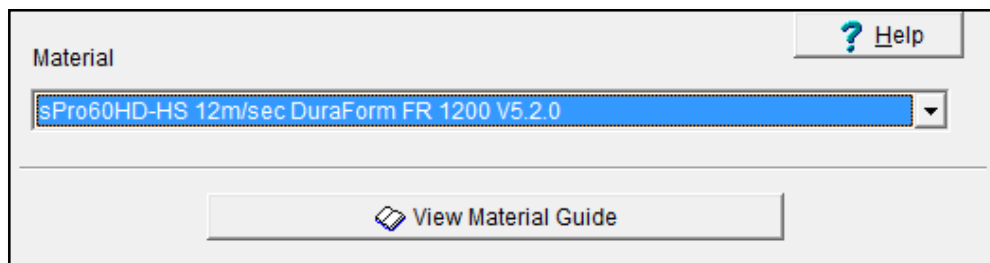
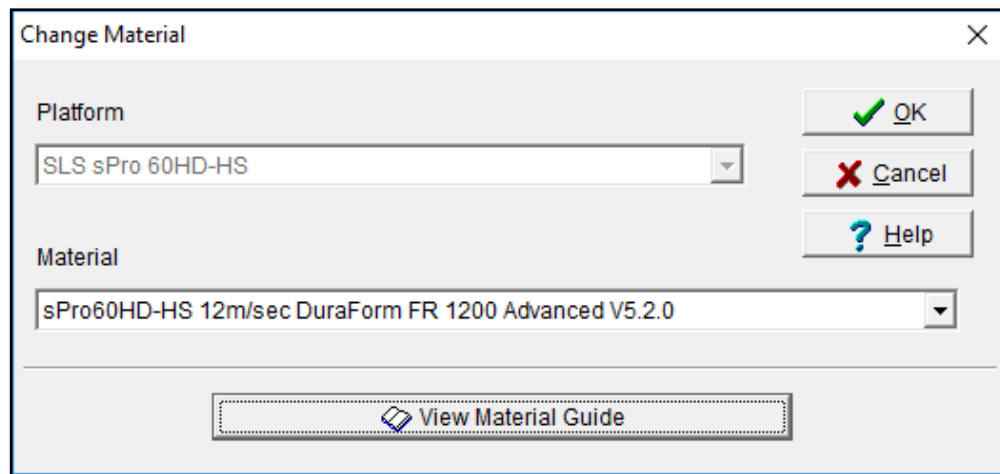


Name	Date modified	Type	Size
material	11/27/2019 12:33 ...	File folder	
swug	11/11/2019 11:09 ...	File folder	
userguide	11/11/2019 11:09 ...	File folder	
<input checked="" type="checkbox"/> CIB00153_DuraForm_TPU_Elastomer_CIB_Rev_A.pdf	10/30/2019 11:48 ...	Adobe Acrobat D...	104 KB
<input checked="" type="checkbox"/> CIB00159_DuraForm_FR1200_CIB_Rev_A.pdf	11/18/2019 5:52 PM	Adobe Acrobat D...	134 KB
index.pdf	6/14/2019 12:42 A...	Adobe Acrobat D...	55 KB

Customer Information Bulletin

Subject: Material document installation guide on SLS sPro60 HD-HS platform

- Launch **BuildSetup** to check if you can view the newly deployed material guides from BuildSetup.



You should now be able to launch the correct material guide by changing the material and clicking “View Material Guide” button as shown in above screens.

Product Register Trademark Disclaimer

DISCLAIMER OF LIABILITY: The following supersedes any related provision in your company's forms, letters, and agreements from, by or with 3D Systems Inc. 3D Systems Inc. makes no warranty, whether expressed or implied, including warranties of merchantability or of fitness for a particular purpose for this product. No statements or recommendations contained in the product literature are to be construed as inducements to infringe any relevant patent now or hereafter in existence. Under no circumstances shall 3D Systems Inc. be liable for incidental, consequential, special, or other damages from alleged negligence, breach of warranty, strict liability or any other theory, arising out of the manufacture, use, sale, or handling of this product. In no event shall the liability of 3D Systems Corporation for any claims arising out of the manufacture, use, handling, or sale of its products exceed an amount equal to the buyer's purchase price.

© Copyright 2019 by 3D Systems, Inc. All rights reserved. Subject to change without notice. **All printers are a registered trademark** and the 3D logo is a trademark of 3D Systems.